



Andy Beshear  
GOVERNOR

## TRANSPORTATION CABINET

200 Mero Street  
Frankfort, Kentucky 40601

Jim Gray  
SECRETARY

January 23, 2023

CALL NO. 420  
CONTRACT ID NO. 237000  
ADDENDUM # 1

Subject: KNOTT-LETCHER COUNTIES, 121GR23M008 - (FD51)  
Letting January 26, 2023

- (1) Revised - Material Summary - Pages 154-161 of 181
- (2) Revised - Proposal Bid Items - Pages 176-181 of 181
- (3) Revised - Plan Sheet - R3 (Posted in Project Related Information)

Proposal revisions are available at <http://transportation.ky.gov/Construction-Procurement/>.

If you have any questions, please contact us at 502-564-3500.

Sincerely,

Rachel Mills,

A handwritten signature in black ink that reads "Rachel Mills".

Rachel Mills, P.E.  
Director  
Division of Construction Procurement

RM:mr  
Enclosures

# MATERIAL SUMMARY

**CONTRACT ID: 237000**

**121GR23M008 (FD51)**

**MB06011082301**

HOLLYBUSH ROAD (CR 1108) BRIDGE 060C00022N OVER HOLLYBUSH CREEK AT MP 00.52 BRIDGE REPLACEMENT.

Project Line No	Bid Code	DESCRIPTION	Quantity	Unit
0580	00001	DGA BASE	348.00	TON
0585	00020	TRAFFIC BOUND BASE	50.00	TON
0590	00078	CRUSHED AGGREGATE SIZE NO 2	97.00	TON
0595	00212	CL2 ASPH BASE 1.00D PG64-22	247.00	TON
0600	00301	CL2 ASPH SURF 0.38D PG64-22	29.00	TON
0605	24970EC	ASPHALT MATERIAL FOR TACK NON-TRACKING	.60	TON
0610	01987	DELINEATOR FOR GUARDRAIL BI DIRECTIONAL WHITE	5.00	EACH
0615	02014	BARRICADE-TYPE III	2.00	EACH
0620	02159	TEMP DITCH	144.00	LF
0625	02160	CLEAN TEMP DITCH	72.00	LF
0630	02200	ROADWAY EXCAVATION	161.00	CUYD
0635	02242	WATER	100.00	MGAL
0640	02360	GUARDRAIL TERMINAL SECTION NO 1	2.00	EACH
0645	02371	GUARDRAIL END TREATMENT TYPE 7	2.00	EACH
0650	02484	CHANNEL LINING CLASS III	630.00	TON
0655	02545	CLEARING AND GRUBBING - (C060022N)	1.00	LS
0660	02562	TEMPORARY SIGNS	300.00	SQFT
0665	02565	OBJECT MARKER TYPE 2	4.00	EACH
0670	02585	EDGE KEY	27.00	LF
0675	02603	FABRIC-GEOTEXTILE CLASS 2	225.00	SQYD
0680	02650	MAINTAIN & CONTROL TRAFFIC - (C060022N)	1.00	LS
0685	02651	DIVERSIONS (BY-PASS DETOURS) - (C060022N)	1.00	LS
0690	02671	PORTABLE CHANGEABLE MESSAGE SIGN	2.00	EACH
0695	02701	TEMP SILT FENCE	576.00	LF
0700	02703	SILT TRAP TYPE A	1.00	EACH
0705	02704	SILT TRAP TYPE B	1.00	EACH
0710	02706	CLEAN SILT TRAP TYPE A	1.00	EACH
0715	02707	CLEAN SILT TRAP TYPE B	1.00	EACH
0720	02726	STAKING - (C060022N)	1.00	LS
0725	02731	REMOVE STRUCTURE - (C060022N)	1.00	LS
0730	03171	CONCRETE BARRIER WALL TYPE 9T	60.00	LF
0735	04933	TEMP SIGNAL 2 PHASE	2.00	EACH
0740	05950	EROSION CONTROL BLANKET	2,100.00	SQYD
0745	05952	TEMP MULCH	1,400.00	SQYD
0750	05953	TEMP SEEDING AND PROTECTION	1,050.00	SQYD
0755	05963	INITIAL FERTILIZER	.30	TON
0760	05964	MAINTENANCE FERTILIZER	.20	TON
0765	05985	SEEDING AND PROTECTION	2,100.00	SQYD
0770	05992	AGRICULTURAL LIMESTONE	1.00	TON
0775	06510	PAVE STRIPING-TEMP PAINT-4 IN	612.00	LF
0780	06514	PAVE STRIPING-PERM PAINT-4 IN	576.00	LF
0785	06587	PAVEMENT MARKER TY IVA-BW TEMP	20.00	EACH
0790	08901	CRASH CUSHION TY VI CLASS BT TL2	1.00	EACH

## MATERIAL SUMMARY

Project Line No	Bid Code	DESCRIPTION	Quantity	Unit
0795	20430ED	SAW CUT	27.00	LF
0800	21802EN	G/R STEEL W BEAM-S FACE (7 FT POST)	250.00	LF
0805	23265ES717	PAVE MARK TY 1 TAPE STOP BAR-24 IN	24.00	LF
0810	02231	STRUCTURE GRANULAR BACKFILL	186.40	CUYD
0815	03299	ARMORED EDGE FOR CONCRETE	28.00	LF
0820	08003	FOUNDATION PREPARATION - (C060022N)	1.00	LS
0825	08033	TEST PILES	38.00	LF
0830	08039	PRE-DRILLING FOR PILES	50.00	LF
0835	08046	PILES-STEEL HP12X53	152.00	LF
0840	08100	CONCRETE-CLASS A	76.70	CUYD
0845	08104	CONCRETE-CLASS AA	30.70	CUYD
0850	08150	STEEL REINFORCEMENT	6,172.00	LB
0855	08151	STEEL REINFORCEMENT-EPOXY COATED	5,212.00	LB
0860	08160	STRUCTURAL STEEL - (C060022N)	1.00	LS
0865	23378EC	CONCRETE SEALING	2,022.00	SQFT
0870	23539EC	BRIDGE RAIL	70.00	LF
0875	02569	DEMOBILIZATION	1.00	LS

# MATERIAL SUMMARY

**CONTRACT ID: 237000**

**121GR23M008 (FD51)**

**MB06013762301**

GLADYS DRIVE (CR 1376) BRIDGE 060C017 OVER BETTY TROUBLESOME CREEK AT MP 00.01 BRIDGE REPLACEMENT.

Project Line No	Bid Code	DESCRIPTION	Quantity	Unit
0005	00001	DGA BASE	87.00	TON
0010	00003	CRUSHED STONE BASE	24.00	TON
0015	00080	CRUSHED AGGREGATE SIZE NO 23	24.00	TON
0020	00100	ASPHALT SEAL AGGREGATE	.30	TON
0025	00103	ASPHALT SEAL COAT	.04	TON
0030	00212	CL2 ASPH BASE 1.00D PG64-22	15.00	TON
0035	00301	CL2 ASPH SURF 0.38D PG64-22	7.00	TON
0040	00356	ASPHALT MATERIAL FOR TACK	.02	TON
0045	01987	DELINEATOR FOR GUARDRAIL BI DIRECTIONAL WHITE	6.00	EACH
0050	02230	EMBANKMENT IN PLACE	29.00	CUYD
0055	02351	GUARDRAIL-STEEL W BEAM-S FACE	137.50	LF
0060	02360	GUARDRAIL TERMINAL SECTION NO 1	2.00	EACH
0065	02585	EDGE KEY	37.00	LF
0070	02604	FABRIC-GEOTEXTILE CLASS 1A	104.00	SQYD
0075	02650	MAINTAIN & CONTROL TRAFFIC - (060C017)	1.00	LS
0080	02726	STAKING - (060C017)	1.00	LS
0085	02731	REMOVE STRUCTURE - (060C017)	1.00	LS
0090	05952	TEMP MULCH	298.00	SQYD
0095	05953	TEMP SEEDING AND PROTECTION	224.00	SQYD
0100	05963	INITIAL FERTILIZER	.02	TON
0105	05964	MAINTENANCE FERTILIZER	.01	TON
0110	05985	SEEDING AND PROTECTION	448.00	SQYD
0115	05992	AGRICULTURAL LIMESTONE	.28	TON
0120	02231	STRUCTURE GRANULAR BACKFILL	145.00	CUYD
0125	02602	FABRIC-GEOTEXTILE CLASS 1	83.00	SQYD
0130	08002	STRUCTURE EXCAV-SOLID ROCK	13.00	CUYD
0135	08003	FOUNDATION PREPARATION - (060C017)	1.00	LS
0140	08100	CONCRETE-CLASS A	65.00	CUYD
0145	08150	STEEL REINFORCEMENT	7,596.00	LB
0150	02569	DEMOBILIZATION	1.00	LS

# MATERIAL SUMMARY

**CONTRACT ID: 237000**

**121GR23M008 (FD51)**

**MB06013872301**

DOBSON DRIVE (CR 1387) BRIDGE 060C014 OVER BALLS FORK AT MP 00.03 BRIDGE REPLACEMENT.

Project Line No	Bid Code	DESCRIPTION	Quantity	Unit
0400	00003	CRUSHED STONE BASE	38.00	TON
0405	00080	CRUSHED AGGREGATE SIZE NO 23	35.00	TON
0410	01987	DELINEATOR FOR GUARDRAIL BI DIRECTIONAL WHITE	6.00	EACH
0415	02014	BARRICADE-TYPE III	2.00	EACH
0420	02351	GUARDRAIL-STEEL W BEAM-S FACE	100.00	LF
0425	02360	GUARDRAIL TERMINAL SECTION NO 1	4.00	EACH
0430	02562	TEMPORARY SIGNS	79.00	SQFT
0435	02650	MAINTAIN & CONTROL TRAFFIC - (060C014)	1.00	LS
0440	02726	STAKING - (060C014)	1.00	LS
0445	02731	REMOVE STRUCTURE - (060C014)	1.00	LS
0450	05952	TEMP MULCH	575.00	SQYD
0455	05953	TEMP SEEDING AND PROTECTION	431.00	SQYD
0460	05963	INITIAL FERTILIZER	.01	TON
0465	05964	MAINTENANCE FERTILIZER	.02	TON
0470	05985	SEEDING AND PROTECTION	307.00	SQYD
0475	05992	AGRICULTURAL LIMESTONE	.20	TON
0480	14004	W DIRECTIONAL BORE	40.00	LF
0485	14056	W PIPE PVC 02 INCH	140.00	LF
0490	14091	W TIE-IN 02 INCH	2.00	EACH
0495	14114	W VALVE CUT-IN 02 INCH	2.00	EACH
0500	20191ED	OBJECT MARKER TY 3	4.00	EACH
0505	02231	STRUCTURE GRANULAR BACKFILL	109.00	CUYD
0510	02998	MASONRY COATING	167.00	SQYD
0515	03299	ARMORED EDGE FOR CONCRETE	24.10	LF
0520	08001	STRUCTURE EXCAVATION-COMMON	89.00	CUYD
0525	08019	CYCLOPEAN STONE RIP RAP	394.00	TON
0530	08033	TEST PILES	38.00	LF
0535	08039	PRE-DRILLING FOR PILES	70.00	LF
0540	08046	PILES-STEEL HP12X53	67.50	LF
0545	08100	CONCRETE-CLASS A	41.20	CUYD
0550	08104	CONCRETE-CLASS AA	16.30	CUYD
0555	08151	STEEL REINFORCEMENT-EPOXY COATED	6,363.00	LB
0560	08665	PRECAST PC BOX BEAM CB33-48	250.50	LF
0565	23378EC	CONCRETE SEALING	1,072.00	SQFT
0570	25017ED	RAIL SYSTEM SIDE MOUNTED MGS	155.00	LF
0575	02569	DEMOBILIZATION	1.00	LS

# MATERIAL SUMMARY

**CONTRACT ID: 237000**

**121GR23M008 (FD51)**

**MB06015382301**

DOVE CROSS LANE (CR 1538) BRIDGE 060C001 OVER CARR FORK AT MP 00.03 BRIDGE REPLACEMENT.

Project Line No	Bid Code	DESCRIPTION	Quantity	Unit
0880	00001	DGA BASE	17.00	TON
0885	00103	ASPHALT SEAL COAT	1.00	TON
0890	00212	CL2 ASPH BASE 1.00D PG64-22	16.27	TON
0895	00301	CL2 ASPH SURF 0.38D PG64-22	2.50	TON
0900	24970EC	ASPHALT MATERIAL FOR TACK NON-TRACKING	1.00	TON
0905	02014	BARRICADE-TYPE III	2.00	EACH
0910	02200	ROADWAY EXCAVATION	20.00	CUYD
0915	02242	WATER	10.00	MGAL
0920	02545	CLEARING AND GRUBBING - (C060001)	1.00	LS
0925	02585	EDGE KEY	19.00	LF
0930	02650	MAINTAIN & CONTROL TRAFFIC - (C060001)	1.00	LS
0935	02726	STAKING - (C060001)	1.00	LS
0940	02731	REMOVE STRUCTURE - EXISTING BRIDGE (C060001)	1.00	LS
0945	02731	REMOVE STRUCTURE - EXISTING DIVERSION - (C060001)	1.00	LS
0950	05992	AGRICULTURAL LIMESTONE	1.00	TON
0955	21415ND	EROSION CONTROL - (C060001)	1.00	LS
0960	03299	ARMORED EDGE FOR CONCRETE	24.00	LF
0965	08003	FOUNDATION PREPARATION - (C060001)	1.00	LS
0970	08019	CYCLOPEAN STONE RIP RAP	95.00	TON
0975	08033	TEST PILES	50.00	LF
0980	08039	PRE-DRILLING FOR PILES	90.80	LF
0985	08051	PILES-STEEL HP14X89	99.80	LF
0990	08100	CONCRETE-CLASS A	56.80	CUYD
0995	08104	CONCRETE-CLASS AA	13.30	CUYD
1000	08151	STEEL REINFORCEMENT-EPOXY COATED	6,147.00	LB
1005	08663	PRECAST PC BOX BEAM CB21-48	168.00	LF
1010	23378EC	CONCRETE SEALING	1,826.00	SQFT
1015	02569	DEMOBILIZATION	1.00	LS
1020	22581EN	ENTRANCE PIPE-36 IN - (ADDED 1-23-2023)	40.00	LF

# MATERIAL SUMMARY

**CONTRACT ID: 237000**

**121GR23M008 (FD51)**

**MB06713392301**

BLAIR BRANCH ROAD (CR 1339) BRIDGE 067C009 OVER BLAIR BRANCH AT MP 00.02 BRIDGE REPLACEMENT.

Project Line No	Bid Code	DESCRIPTION	Quantity	Unit
1175	00001	DGA BASE	40.00	TON
1180	00100	ASPHALT SEAL AGGREGATE	3.80	TON
1185	00103	ASPHALT SEAL COAT	1.00	TON
1190	00212	CL2 ASPH BASE 1.00D PG64-22	29.00	TON
1195	00301	CL2 ASPH SURF 0.38D PG64-22	6.00	TON
1200	24970EC	ASPHALT MATERIAL FOR TACK NON-TRACKING	1.00	TON
1205	02014	BARRICADE-TYPE III	2.00	EACH
1210	02200	ROADWAY EXCAVATION	41.00	CUYD
1215	02223	GRANULAR EMBANKMENT	20.00	CUYD
1220	02242	WATER	20.00	MGAL
1225	02545	CLEARING AND GRUBBING - 0.1 ACRE (067C009)	1.00	LS
1230	02585	EDGE KEY	21.00	LF
1235	02650	MAINTAIN & CONTROL TRAFFIC - (067C009)	1.00	LS
1240	02671	PORTABLE CHANGEABLE MESSAGE SIGN	2.00	EACH
1245	02726	STAKING - (067C009)	1.00	LS
1250	02731	REMOVE STRUCTURE - (067C009)	1.00	LS
1255	21415ND	EROSION CONTROL - (067C009)	1.00	LS
1260	01987	DELINEATOR FOR GUARDRAIL BI DIRECTIONAL WHITE	4.00	EACH
1265	02360	GUARDRAIL TERMINAL SECTION NO 1	4.00	EACH
1270	02565	OBJECT MARKER TYPE 2	4.00	EACH
1275	03299	ARMORED EDGE FOR CONCRETE	24.00	LF
1280	08003	FOUNDATION PREPARATION - (067C009)	1.00	LS
1285	08019	CYCLOPEAN STONE RIP RAP	137.00	TON
1290	08033	TEST PILES	54.00	LF
1295	08039	PRE-DRILLING FOR PILES	91.50	LF
1300	08046	PILES-STEEL HP12X53	81.00	LF
1305	08100	CONCRETE-CLASS A	38.00	CUYD
1310	08104	CONCRETE-CLASS AA	6.00	CUYD
1315	08151	STEEL REINFORCEMENT-EPOXY COATED	3,795.00	LB
1320	08661	PRECAST PC BOX BEAM CB12-48	90.00	LF
1325	23378EC	CONCRETE SEALING	864.00	SQFT
1330	23539EC	BRIDGE RAIL	60.00	LF
1335	02569	DEMOBILIZATION	1.00	LS

# MATERIAL SUMMARY

**CONTRACT ID: 237000**

**121GR23M008 (FD51)**

**MB06718352301**

WORLEY LANE (CR 1835) BRIDGE 067C006 OVER THORTON CREEK AT MP 00.02 BRIDGE REPLACEMENT.

Project Line No	Bid Code	DESCRIPTION	Quantity	Unit
1020	00001	DGA BASE	39.00	TON
1025	00100	ASPHALT SEAL AGGREGATE	3.80	TON
1030	00103	ASPHALT SEAL COAT	1.00	TON
1035	00212	CL2 ASPH BASE 1.00D PG64-22	37.00	TON
1040	00301	CL2 ASPH SURF 0.38D PG64-22	11.00	TON
1045	24970EC	ASPHALT MATERIAL FOR TACK NON-TRACKING	1.00	TON
1050	02014	BARRICADE-TYPE III	2.00	EACH
1055	02091	REMOVE PAVEMENT	268.00	SQYD
1060	02200	ROADWAY EXCAVATION	10.00	CUYD
1065	02223	GRANULAR EMBANKMENT	20.00	CUYD
1070	02242	WATER	20.00	MGAL
1075	02545	CLEARING AND GRUBBING - 0.1 ACRE (067C006)	1.00	LS
1080	02650	MAINTAIN & CONTROL TRAFFIC - (067C006)	1.00	LS
1085	02671	PORTABLE CHANGEABLE MESSAGE SIGN	2.00	EACH
1090	02726	STAKING - (067C006)	1.00	LS
1095	02731	REMOVE STRUCTURE - (067C006)	1.00	LS
1100	20550ND	SAWCUT PAVEMENT	45.00	LF
1105	21415ND	EROSION CONTROL - (067C006)	1.00	LS
1110	01987	DELINEATOR FOR GUARDRAIL BI DIRECTIONAL WHITE	4.00	EACH
1115	02351	GUARDRAIL-STEEL W BEAM-S FACE	50.00	LF
1120	02360	GUARDRAIL TERMINAL SECTION NO 1	4.00	EACH
1125	02565	OBJECT MARKER TYPE 2	4.00	EACH
1130	03250	WATERPROOFING MEMBRANE	43.50	SQYD
1135	08003	FOUNDATION PREPARATION - (067C006)	1.00	LS
1140	08019	CYCLOPEAN STONE RIP RAP	31.00	TON
1145	08100	CONCRETE-CLASS A	70.80	CUYD
1150	08150	STEEL REINFORCEMENT	5,018.00	LB
1155	08651	PRECAST PC BOX BEAM B12-48	100.00	LF
1160	23378EC	CONCRETE SEALING	305.00	SQFT
1165	24375EC	STRUCTURE EXCAVATION-SPECIAL SOLID ROCK	52.40	CUYD
1170	02569	DEMOBILIZATION	1.00	LS

**CONTRACT ID: 237000**

**121GR23M008 (FD51)**

**MB06718802301**

JIM MCCRAY ROAD (CR 1880) BRIDGE 067C021 OVER ROCKHOUSE CREEK AT MP 00.01 BRIDGE REPLACEMENT.

Project Line No	Bid Code	DESCRIPTION	Quantity	Unit
0155	00001	DGA BASE	234.00	TON
0160	00100	ASPHALT SEAL AGGREGATE	2.80	TON



# MATERIAL SUMMARY

Project Line No	Bid Code	DESCRIPTION	Quantity	Unit
0165	00103	ASPHALT SEAL COAT	.30	TON
0170	00221	CL2 ASPH BASE 0.75D PG64-22	58.00	TON
0175	00296	ASPHALT PRIME COAT	.20	TON
0180	00301	CL2 ASPH SURF 0.38D PG64-22	24.00	TON
0185	00356	ASPHALT MATERIAL FOR TACK	.20	TON
0190	01987	DELINEATOR FOR GUARDRAIL BI DIRECTIONAL WHITE	8.00	EACH
0195	02159	TEMP DITCH	107.00	LF
0200	02160	CLEAN TEMP DITCH	37.00	LF
0205	02200	ROADWAY EXCAVATION	73.00	CUYD
0210	02242	WATER	28.00	MGAL
0215	02273	FENCE-4 FT CHAIN LINK	42.00	LF
0220	02281	PEDESTRIAN GATE-CHAIN LINK	1.00	EACH
0225	02351	GUARDRAIL-STEEL W BEAM-S FACE	62.50	LF
0230	02360	GUARDRAIL TERMINAL SECTION NO 1	4.00	EACH
0235	02399	EXTRA LENGTH GUARDRAIL POST	12.00	EACH
0240	02545	CLEARING AND GRUBBING - -	1.00	LS
0245	02555	CONCRETE-CLASS B	4.30	CUYD
0250	02565	OBJECT MARKER TYPE 2	4.00	EACH
0255	02585	EDGE KEY	167.00	LF
0260	02602	FABRIC-GEOTEXTILE CLASS 1	59.00	SQYD
0265	02650	MAINTAIN & CONTROL TRAFFIC - (067C021)	1.00	LS
0270	02651	DIVERSIONS (BY-PASS DETOURS) - (067C021)	1.00	LS
0275	02701	TEMP SILT FENCE	73.00	LF
0280	02703	SILT TRAP TYPE A	1.00	EACH
0285	02704	SILT TRAP TYPE B	1.00	EACH
0290	02706	CLEAN SILT TRAP TYPE A	1.00	EACH
0295	02707	CLEAN SILT TRAP TYPE B	1.00	EACH
0300	02726	STAKING - (067C021)	1.00	LS
0305	05950	EROSION CONTROL BLANKET	81.00	SQYD
0310	05952	TEMP MULCH	1,090.00	SQYD
0315	05953	TEMP SEEDING AND PROTECTION	813.00	SQYD
0320	05963	INITIAL FERTILIZER	.04	TON
0325	05964	MAINTENANCE FERTILIZER	.06	TON
0330	05985	SEEDING AND PROTECTION	1,123.00	SQYD
0335	05992	AGRICULTURAL LIMESTONE	.75	TON
0340	24631EC	BARCODE SIGN INVENTORY	4.00	EACH
0345	24896ED	RAIL SYSTEM TYPE T631	37.50	LF
0350	02223	GRANULAR EMBANKMENT	65.60	CUYD
0355	02231	STRUCTURE GRANULAR BACKFILL	101.00	CUYD
0360	03299	ARMORED EDGE FOR CONCRETE	28.90	LF
0365	08002	STRUCTURE EXCAV-SOLID ROCK	48.80	CUYD
0370	08003	FOUNDATION PREPARATION - (067C021)	1.00	LS
0375	08100	CONCRETE-CLASS A	71.40	CUYD
0380	08150	STEEL REINFORCEMENT	4,701.00	LB
0385	08151	STEEL REINFORCEMENT-EPOXY COATED	3,950.00	LB
0390	23378EC	CONCRETE SEALING	525.00	SQFT
0395	02569	DEMOBILIZATION	1.00	LS

**PROPOSAL BID ITEMS**

237000

Page 1 of 6

Report Date 1/23/23

**Section: 0001 - PAVING**

LINE	BID CODE	ALT	DESCRIPTION	QUANTITY	UNIT	UNIT PRIC	FP	AMOUNT
0010	00001		DGA BASE	765.00	TON		\$	
0020	00003		CRUSHED STONE BASE	62.00	TON		\$	
0030	00020		TRAFFIC BOUND BASE	50.00	TON		\$	
0040	00078		CRUSHED AGGREGATE SIZE NO 2	97.00	TON		\$	
0050	00080		CRUSHED AGGREGATE SIZE NO 23	59.00	TON		\$	
0060	00100		ASPHALT SEAL AGGREGATE	10.70	TON		\$	
0070	00103		ASPHALT SEAL COAT	3.34	TON		\$	
0080	00212		CL2 ASPH BASE 1.00D PG64-22	344.27	TON		\$	
0090	00221		CL2 ASPH BASE 0.75D PG64-22	58.00	TON		\$	
0100	00296		ASPHALT PRIME COAT	.20	TON		\$	
0110	00301		CL2 ASPH SURF 0.38D PG64-22	79.50	TON		\$	
0120	00356		ASPHALT MATERIAL FOR TACK	.22	TON		\$	
0130	24970EC		ASPHALT MATERIAL FOR TACK NON-TRACKING	3.60	TON		\$	

**Section: 0002 - ROADWAY**

LINE	BID CODE	ALT	DESCRIPTION	QUANTITY	UNIT	UNIT PRIC	FP	AMOUNT
0140	01987		DELINEATOR FOR GUARDRAIL BI DIRECTIONAL WHITE	25.00	EACH		\$	
0150	02014		BARRICADE-TYPE III	10.00	EACH		\$	
0160	02091		REMOVE PAVEMENT	268.00	SQYD		\$	
0170	02159		TEMP DITCH	251.00	LF		\$	
0180	02160		CLEAN TEMP DITCH	109.00	LF		\$	
0190	02200		ROADWAY EXCAVATION	305.00	CUYD		\$	
0200	02223		GRANULAR EMBANKMENT	40.00	CUYD		\$	
0210	02230		EMBANKMENT IN PLACE	29.00	CUYD		\$	
0220	02242		WATER	178.00	MGAL		\$	
0230	02273		FENCE-4 FT CHAIN LINK	42.00	LF		\$	
0240	02281		PEDESTRIAN GATE-CHAIN LINK	1.00	EACH		\$	
0250	02351		GUARDRAIL-STEEL W BEAM-S FACE	300.00	LF		\$	
0260	02360		GUARDRAIL TERMINAL SECTION NO 1	12.00	EACH		\$	
0270	02371		GUARDRAIL END TREATMENT TYPE 7	2.00	EACH		\$	
0280	02399		EXTRA LENGTH GUARDRAIL POST	12.00	EACH		\$	
0290	02484		CHANNEL LINING CLASS III	630.00	TON		\$	
0300	02545		CLEARING AND GRUBBING -	1.00	LS		\$	
0310	02545		CLEARING AND GRUBBING (C060001)	1.00	LS		\$	
0320	02545		CLEARING AND GRUBBING (C060022N)	1.00	LS		\$	
0330	02545		CLEARING AND GRUBBING 0.1 ACRE (067C006)	1.00	LS		\$	
0340	02545		CLEARING AND GRUBBING 0.1 ACRE (067C009)	1.00	LS		\$	
0350	02555		CONCRETE-CLASS B	4.30	CUYD		\$	
0360	02562		TEMPORARY SIGNS	379.00	SQFT		\$	
0370	02565		OBJECT MARKER TYPE 2	8.00	EACH		\$	

**PROPOSAL BID ITEMS**

237000

Report Date 1/23/23

LINE	BID CODE	ALT	DESCRIPTION	QUANTITY	UNIT	UNIT PRIC	FP	AMOUNT
0380	02585		EDGE KEY	271.00	LF		\$	
0390	02602		FABRIC-GEOTEXTILE CLASS 1	59.00	SQYD		\$	
0400	02603		FABRIC-GEOTEXTILE CLASS 2	225.00	SQYD		\$	
0410	02604		FABRIC-GEOTEXTILE CLASS 1A	104.00	SQYD		\$	
0420	02650		MAINTAIN & CONTROL TRAFFIC (060C014)	1.00	LS		\$	
0430	02650		MAINTAIN & CONTROL TRAFFIC (060C017)	1.00	LS		\$	
0440	02650		MAINTAIN & CONTROL TRAFFIC (067C006)	1.00	LS		\$	
0450	02650		MAINTAIN & CONTROL TRAFFIC (067C009)	1.00	LS		\$	
0460	02650		MAINTAIN & CONTROL TRAFFIC (067C021)	1.00	LS		\$	
0470	02650		MAINTAIN & CONTROL TRAFFIC (C060001)	1.00	LS		\$	
0480	02650		MAINTAIN & CONTROL TRAFFIC (C060022N)	1.00	LS		\$	
0490	02651		DIVERSIONS (BY-PASS DETOURS) (067C021)	1.00	LS		\$	
0500	02651		DIVERSIONS (BY-PASS DETOURS) (C060022N)	1.00	LS		\$	
0510	02671		PORTABLE CHANGEABLE MESSAGE SIGN	6.00	EACH		\$	
0520	02701		TEMP SILT FENCE	649.00	LF		\$	
0530	02703		SILT TRAP TYPE A	2.00	EACH		\$	
0540	02704		SILT TRAP TYPE B	2.00	EACH		\$	
0550	02706		CLEAN SILT TRAP TYPE A	2.00	EACH		\$	
0560	02707		CLEAN SILT TRAP TYPE B	2.00	EACH		\$	
0570	02726		STAKING (060C014)	1.00	LS		\$	
0580	02726		STAKING (060C017)	1.00	LS		\$	
0590	02726		STAKING (067C006)	1.00	LS		\$	
0600	02726		STAKING (067C009)	1.00	LS		\$	
0610	02726		STAKING (067C021)	1.00	LS		\$	
0620	02726		STAKING (C060001)	1.00	LS		\$	
0630	02726		STAKING (C060022N)	1.00	LS		\$	
0640	02731		REMOVE STRUCTURE (060C014)	1.00	LS		\$	
0650	02731		REMOVE STRUCTURE (060C017)	1.00	LS		\$	
0660	02731		REMOVE STRUCTURE (067C006)	1.00	LS		\$	
0670	02731		REMOVE STRUCTURE (067C009)	1.00	LS		\$	
0680	02731		REMOVE STRUCTURE (C060022N)	1.00	LS		\$	
0690	02731		REMOVE STRUCTURE EXISTING BRIDGE (C060001)	1.00	LS		\$	

**PROPOSAL BID ITEMS**

237000

Page 3 of 6

Report Date 1/23/23

LINE	BID CODE	ALT	DESCRIPTION	QUANTITY	UNIT	UNIT PRIC	FP	AMOUNT
0700	02731		REMOVE STRUCTURE EXISTING DIVERSION - (C060001)	1.00	LS		\$	
0710	03171		CONCRETE BARRIER WALL TYPE 9T	60.00	LF		\$	
0720	04933		TEMP SIGNAL 2 PHASE	2.00	EACH		\$	
0730	05950		EROSION CONTROL BLANKET	2,181.00	SQYD		\$	
0740	05952		TEMP MULCH	3,363.00	SQYD		\$	
0750	05953		TEMP SEEDING AND PROTECTION	2,518.00	SQYD		\$	
0760	05963		INITIAL FERTILIZER	.37	TON		\$	
0770	05964		MAINTENANCE FERTILIZER	.29	TON		\$	
0780	05985		SEEDING AND PROTECTION	3,978.00	SQYD		\$	
0790	05992		AGRICULTURAL LIMESTONE	3.23	TON		\$	
0800	06510		PAVE STRIPING-TEMP PAINT-4 IN	612.00	LF		\$	
0810	06514		PAVE STRIPING-PERM PAINT-4 IN	576.00	LF		\$	
0820	06587		PAVEMENT MARKER TY IVA-BW TEMP	20.00	EACH		\$	
0830	08901		CRASH CUSHION TY VI CLASS BT TL2	1.00	EACH		\$	
0840	14004		W DIRECTIONAL BORE	40.00	LF		\$	
0850	14056		W PIPE PVC 02 INCH	140.00	LF		\$	
0860	14091		W TIE-IN 02 INCH	2.00	EACH		\$	
0870	14114		W VALVE CUT-IN 02 INCH	2.00	EACH		\$	
0880	20191ED		OBJECT MARKER TY 3	4.00	EACH		\$	
0890	20430ED		SAW CUT	27.00	LF		\$	
0900	20550ND		SAWCUT PAVEMENT	45.00	LF		\$	
0910	21415ND		EROSION CONTROL (067C006)	1.00	LS		\$	
0920	21415ND		EROSION CONTROL (067C009)	1.00	LS		\$	
0930	21415ND		EROSION CONTROL (C060001)	1.00	LS		\$	
0940	21802EN		G/R STEEL W BEAM-S FACE (7 FT POST)	250.00	LF		\$	
0945	22581EN		ENTRANCE PIPE-36 IN (ADDED 1-23-2023)	40.00	LF		\$	
0950	23265ES717		PAVE MARK TY 1 TAPE STOP BAR-24 IN	24.00	LF		\$	
0960	24631EC		BARCODE SIGN INVENTORY	4.00	EACH		\$	
0970	24896ED		RAIL SYSTEM TYPE T631	37.50	LF		\$	

**Section: 0003 - BRIDGE - 060C00022N**

LINE	BID CODE	ALT	DESCRIPTION	QUANTITY	UNIT	UNIT PRIC	FP	AMOUNT
0980	02231		STRUCTURE GRANULAR BACKFILL	186.40	CUYD		\$	
0990	03299		ARMORED EDGE FOR CONCRETE	28.00	LF		\$	
1000	08003		FOUNDATION PREPARATION (C060022N)	1.00	LS		\$	
1010	08033		TEST PILES	38.00	LF		\$	
1020	08039		PRE-DRILLING FOR PILES	50.00	LF		\$	
1030	08046		PILES-STEEL HP12X53	152.00	LF		\$	
1040	08100		CONCRETE-CLASS A	76.70	CUYD		\$	
1050	08104		CONCRETE-CLASS AA	30.70	CUYD		\$	
1060	08150		STEEL REINFORCEMENT	6,172.00	LB		\$	
1070	08151		STEEL REINFORCEMENT-EPOXY COATED	5,212.00	LB		\$	

**PROPOSAL BID ITEMS**

237000

Page 4 of 6

Report Date 1/23/23

LINE	BID CODE	ALT	DESCRIPTION	QUANTITY	UNIT	UNIT PRIC	FP	AMOUNT
1080	08160		STRUCTURAL STEEL (C060022N)	1.00	LS		\$	
1090	23378EC		CONCRETE SEALING	2,022.00	SQFT		\$	
1100	23539EC		BRIDGE RAIL	70.00	LF		\$	

**Section: 0004 - BRIDGE - 060C017**

LINE	BID CODE	ALT	DESCRIPTION	QUANTITY	UNIT	UNIT PRIC	FP	AMOUNT
1110	02231		STRUCTURE GRANULAR BACKFILL	145.00	CUYD		\$	
1120	02602		FABRIC-GEOTEXTILE CLASS 1	83.00	SQYD		\$	
1130	08002		STRUCTURE EXCAV-SOLID ROCK	13.00	CUYD		\$	
1140	08003		FOUNDATION PREPARATION (060C017)	1.00	LS		\$	
1150	08100		CONCRETE-CLASS A	65.00	CUYD		\$	
1160	08150		STEEL REINFORCEMENT	7,596.00	LB		\$	

**Section: 0005 - BRIDGE - 060C014**

LINE	BID CODE	ALT	DESCRIPTION	QUANTITY	UNIT	UNIT PRIC	FP	AMOUNT
1170	02231		STRUCTURE GRANULAR BACKFILL	109.00	CUYD		\$	
1180	02998		MASONRY COATING	167.00	SQYD		\$	
1190	03299		ARMORED EDGE FOR CONCRETE	24.10	LF		\$	
1200	08001		STRUCTURE EXCAVATION-COMMON	89.00	CUYD		\$	
1210	08019		CYCLOPEAN STONE RIP RAP	394.00	TON		\$	
1220	08033		TEST PILES	38.00	LF		\$	
1230	08039		PRE-DRILLING FOR PILES	70.00	LF		\$	
1240	08046		PILES-STEEL HP12X53	67.50	LF		\$	
1250	08100		CONCRETE-CLASS A	41.20	CUYD		\$	
1260	08104		CONCRETE-CLASS AA	16.30	CUYD		\$	
1270	08151		STEEL REINFORCEMENT-EPOXY COATED	6,363.00	LB		\$	
1280	08665		PRECAST PC BOX BEAM CB33-48	250.50	LF		\$	
1290	23378EC		CONCRETE SEALING	1,072.00	SQFT		\$	
1300	25017ED		RAIL SYSTEM SIDE MOUNTED MGS	155.00	LF		\$	

**Section: 0006 - BRIDGE - 060C001**

LINE	BID CODE	ALT	DESCRIPTION	QUANTITY	UNIT	UNIT PRIC	FP	AMOUNT
1310	03299		ARMORED EDGE FOR CONCRETE	24.00	LF		\$	
1320	08003		FOUNDATION PREPARATION (C060001)	1.00	LS		\$	
1330	08019		CYCLOPEAN STONE RIP RAP	95.00	TON		\$	
1340	08033		TEST PILES	50.00	LF		\$	
1350	08039		PRE-DRILLING FOR PILES	90.80	LF		\$	
1360	08051		PILES-STEEL HP14X89	99.80	LF		\$	
1370	08100		CONCRETE-CLASS A	56.80	CUYD		\$	
1380	08104		CONCRETE-CLASS AA	13.30	CUYD		\$	
1390	08151		STEEL REINFORCEMENT-EPOXY COATED	6,147.00	LB		\$	

**PROPOSAL BID ITEMS**

237000

Page 5 of 6

Report Date 1/23/23

LINE	BID CODE	ALT	DESCRIPTION	QUANTITY	UNIT	UNIT PRIC	FP	AMOUNT
1400	08663		PRECAST PC BOX BEAM CB21-48	168.00	LF		\$	
1410	23378EC		CONCRETE SEALING	1,826.00	SQFT		\$	

**Section: 0007 - BRIDGE - 067C009**

LINE	BID CODE	ALT	DESCRIPTION	QUANTITY	UNIT	UNIT PRIC	FP	AMOUNT
1420	01987		DELINEATOR FOR GUARDRAIL BI DIRECTIONAL WHITE	4.00	EACH		\$	
1430	02360		GUARDRAIL TERMINAL SECTION NO 1	4.00	EACH		\$	
1440	02565		OBJECT MARKER TYPE 2	4.00	EACH		\$	
1450	03299		ARMORED EDGE FOR CONCRETE	24.00	LF		\$	
1460	08003		FOUNDATION PREPARATION (067C009)	1.00	LS		\$	
1470	08019		CYCLOPEAN STONE RIP RAP	137.00	TON		\$	
1480	08033		TEST PILES	54.00	LF		\$	
1490	08039		PRE-DRILLING FOR PILES	91.50	LF		\$	
1500	08046		PILES-STEEL HP12X53	81.00	LF		\$	
1510	08100		CONCRETE-CLASS A	38.00	CUYD		\$	
1520	08104		CONCRETE-CLASS AA	6.00	CUYD		\$	
1530	08151		STEEL REINFORCEMENT-EPOXY COATED	3,795.00	LB		\$	
1540	08661		PRECAST PC BOX BEAM CB12-48	90.00	LF		\$	
1550	23378EC		CONCRETE SEALING	864.00	SQFT		\$	
1560	23539EC		BRIDGE RAIL	60.00	LF		\$	

**Section: 0008 - BRIDGE - 067C006**

LINE	BID CODE	ALT	DESCRIPTION	QUANTITY	UNIT	UNIT PRIC	FP	AMOUNT
1570	01987		DELINEATOR FOR GUARDRAIL BI DIRECTIONAL WHITE	4.00	EACH		\$	
1580	02351		GUARDRAIL-STEEL W BEAM-S FACE	50.00	LF		\$	
1590	02360		GUARDRAIL TERMINAL SECTION NO 1	4.00	EACH		\$	
1600	02565		OBJECT MARKER TYPE 2	4.00	EACH		\$	
1610	03250		WATERPROOFING MEMBRANE	43.50	SQYD		\$	
1620	08003		FOUNDATION PREPARATION (067C006)	1.00	LS		\$	
1630	08019		CYCLOPEAN STONE RIP RAP	31.00	TON		\$	
1640	08100		CONCRETE-CLASS A	70.80	CUYD		\$	
1650	08150		STEEL REINFORCEMENT	5,018.00	LB		\$	
1660	08651		PRECAST PC BOX BEAM B12-48	100.00	LF		\$	
1670	23378EC		CONCRETE SEALING	305.00	SQFT		\$	
1680	24375EC		STRUCTURE EXCAVATION-SPECIAL SOLID ROCK	52.40	CUYD		\$	

**Section: 0009 - BRIDGE - 067C021**

LINE	BID CODE	ALT	DESCRIPTION	QUANTITY	UNIT	UNIT PRIC	FP	AMOUNT
1690	02223		GRANULAR EMBANKMENT	65.60	CUYD		\$	

### PROPOSAL BID ITEMS

237000

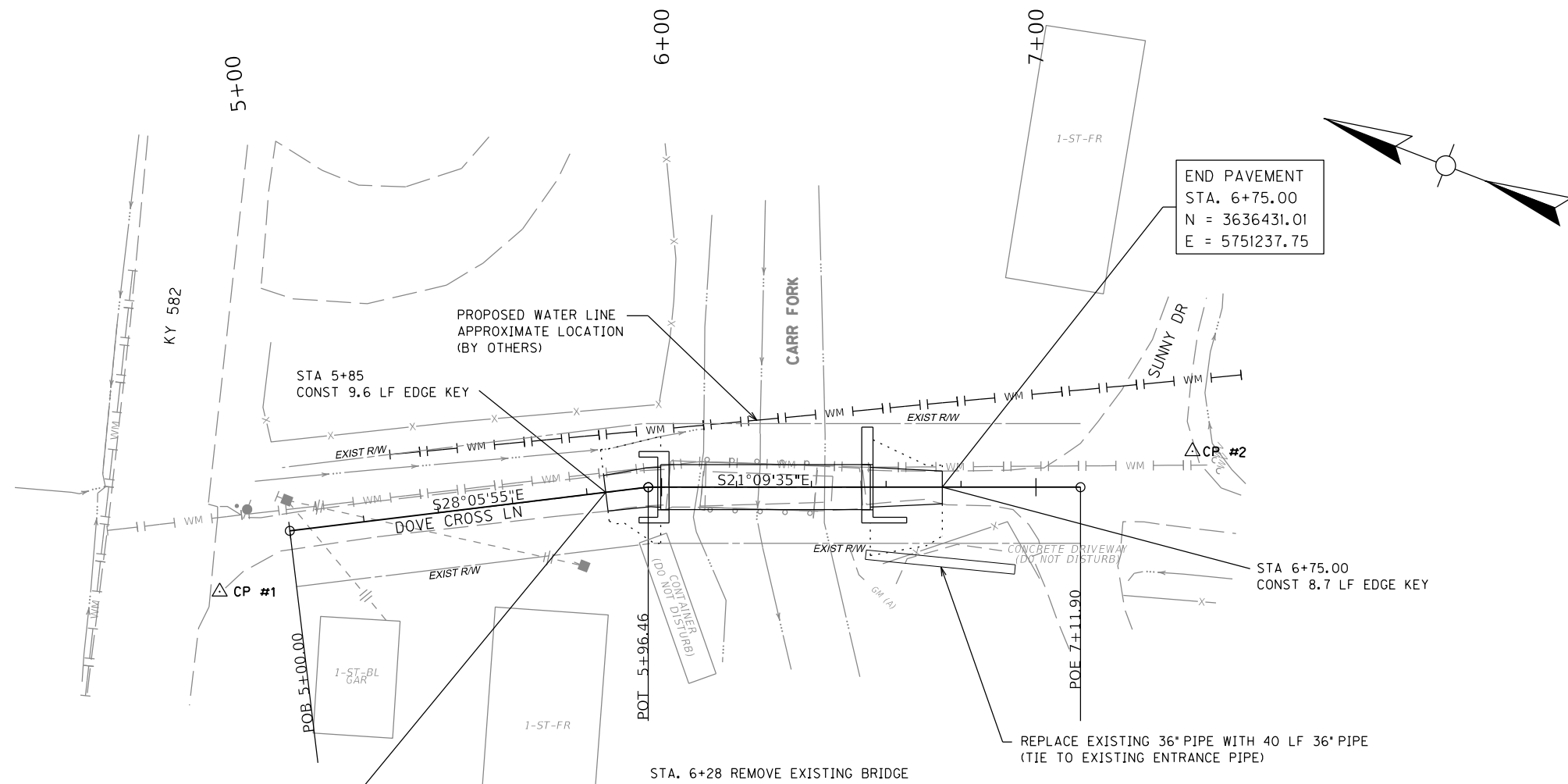
Page 6 of 6

Report Date 1/23/23

LINE	BID CODE	ALT	DESCRIPTION	QUANTITY	UNIT	UNIT PRIC	FP	AMOUNT
1700	02231		STRUCTURE GRANULAR BACKFILL	101.00	CUYD		\$	
1710	03299		ARMORED EDGE FOR CONCRETE	28.90	LF		\$	
1720	08002		STRUCTURE EXCAV-SOLID ROCK	48.80	CUYD		\$	
1730	08003		FOUNDATION PREPARATION (067C021)	1.00	LS		\$	
1740	08100		CONCRETE-CLASS A	71.40	CUYD		\$	
1750	08150		STEEL REINFORCEMENT	4,701.00	LB		\$	
1760	08151		STEEL REINFORCEMENT-EPOXY COATED	3,950.00	LB		\$	
1770	23378EC		CONCRETE SEALING	525.00	SQFT		\$	

### Section: 0010 - DEMOBILIZATION

LINE	BID CODE	ALT	DESCRIPTION	QUANTITY	UNIT	UNIT PRIC	FP	AMOUNT
1780	02569		DEMOBILIZATION	1.00	LS		\$	



BEGIN PAVEMENT  
 STA. 5+85.00  
 N = 3636514.36  
 E = 5751204.00

END PAVEMENT  
 STA. 6+75.00  
 N = 3636431.01  
 E = 5751237.75

STA. 6+28 REMOVE EXISTING BRIDGE

**STRUCTURE REMOVAL NOTE**

The existing diversion 445' upstream shall be removed in accordance with the current specifications. All material excluding the pipes shall remain the property of the contractor and shall be disposed of in accordance with the current specifications. Lump sum payment in full shall include the complete removal of all material. The contractor shall final dress all slopes.

Pipes will be delivered to:

KYTC Department of Highways  
 Knott County Maintenance  
 1894 Highway 160 South  
 Hindman, KY 41822